



JENSON



LUMIERE
SUB-OHM V8 COILS

0.3 Ω & 0.5 Ω
USER MANUAL

THE BELOW WARNING ONLY APPLIES WHEN THIS DEVICE
HAS BEEN FILLED WITH E-LIQUID CONTAINING NICOTINE

**This product
contains nicotine
which is a highly
addictive substance.**



JENSON

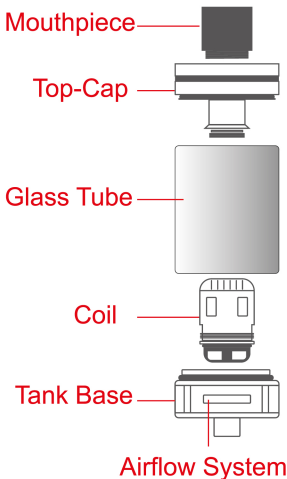


DESIGNED IN THE UNITED KINGDOM
MADE IN CHINA TO UK/EU STANDARDS

Proudly produced by Jenson E-Cig Ltd,
PO Box 340, Wallington, SM6 6BT
Customer Care: t: 020 8619 1060
e: customerservices@jensonecig.com

WWW.JENSONECIG.COM

Diagram of Lumiere tank





Introduction:

The Lumiere V8 dual core coils are designed to work perfectly with the Jenson Lumiere tank. The Lumiere tank has been designed to offer the perfect blend of performance, reliability and usability. Combined with the coil, the tank will supply smooth and flavourful clouds allowing you to enjoy every carefully crafted flavour note of your favourite Jenson high-VG e-liquids.

Jenson E-Cig, constantly innovating to bring you the best vaping experience.

Depending on purchase option, this box will include:

3 x Lumiere V8 **0.5Ω** S-Steel dual core coil (pre-installed) (Compatible with VW mode only: 20w-50w)

- OR -

3 x Lumiere V8 **0.3Ω** S-Steel dual core coil (Compatible with TC mode and VW mode: 30w-60w)* *See page 4*

1 x User Manual

Specifications:

Lumiere V8 dual core coil:

Material: Stainless Steel and organic cotton

Recommended usage ranges: *See page 3*



Replacing atomizer coil:

Firstly, screw the drip tip and top cap off the tank; then screw the atomizer off the base and replace with a new coil. To control airflow rotate the bottom adjustable airflow system to your desired position.

If you need any additional information or have any questions about the products or its use, please contact our customer services team on: T: 020 8619 1060 or W: www.jensonecig.com.

*0.3 Ω S-Steel dual core coil is compatible for use with Temperature Control and Variable Wattage modes with devices that provide that functionality. Operating range for TC mode: 100-315°C/200-600°F. It is important that you check your specific device manuals for details before usage.

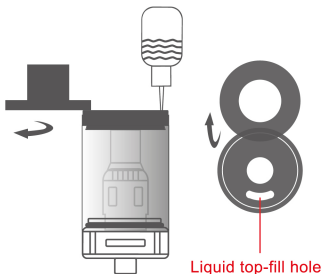
Usage notes:

1. Before use please read the manual carefully.
2. Please do not keep the liquid inside the atomizer if the device is not going to be used for a long period.
3. Do not allow the tank to run dry of e-liquid to avoid dry-burning of the atomizer.
4. Please do not drop, throw or mishandle this product as the outer shell or inner components may become damaged.

Operating instructions:

Filling Lumiere tank with e-liquid:

1. Holding the tank with one hand, use the other to slide the top cap counterclockwise.
2. Pour the e-liquid through the top filling hole. Pay attention not to drip into the central airflow tube.
3. Close the cap carefully and firmly. **Ensure you let it stand for several minutes to completely saturate the organic cotton in the coil. Failure to do so will likely result in a burnt and unusable coil.**



**Warranty:**

These coils are consumable items lasting anything from a few days to a month depending on use and as such there is no warranty applicable. In the vast majority of cases problems with coils are caused by a failure to prime properly or by the use of e-liquids with high sugar levels.

Please contact Jenson E-Cig for more information and terms of service.

For more info on warranty policy and processes, please visit our website www.jensonecig.com or call our customer services team on 020 8619 1060.

Legal Disclaimer

Intended for use by adults and should not be sold to minors. Please abide by the legal smoking age applicable to the country of use.

WARNING

This product is not intended for use by persons under the legal smoking age, non-smokers, women who are pregnant or breastfeeding, or persons with, or at risk of, heart disease, high blood pressure, diabetes, or taking medicine for depression or asthma.



JENSON



**Scan QR code
for more info**

**For details on our full
range of quality
vaping products, visit**

WWW.JENSONECIG.COM